

The Factory Model

Price: \$185,790
Interior Lot Lease: \$400

371 St. Andrews St. - Lot 309

• 1,027 Sq. Ft. • 2 Bedroom, 2 Bath



Standard Specifications

CONSTRUCTION

- R-22 Ceiling Insulation
- R-13 Wall Insulation
- R-11 Floor Insulation
- All Weather-stripping & Insulation meets or exceeds the HUD Required Insulation Standards for Zone 3 (Nevada)

EXTERIOR

- Low "E" Dual Glaze Windows Throughout
- Cemplank (Low Maintenance) Window Trim
- Cemplank (Low Maintenance) Siding
- Cemplank (Low Maintenance) Facia
- 20-Year Roof (Class A) Shingles
- 9-Light Exterior Door
- 6-Panel Architectural Entry Door

KITCHEN

- Granite or Quartz Counter-Tops w/ Single Eased Edge
- 4" Granite or Quartz Backsplash
- Cabinet with Utility Drawers
- Lined Overhead Kitchen Cabinets
- Brushed Nickel Kitchen Faucet
- Stainless Steel Undermount Sink
- Deluxe Cabinets

INTERIOR

- Rounded Drywall Corners
- 6-Panel Interior Doors
- Architectural Door Case Molding
- Brushed Nickel Lighting Fixtures
- Brushed Nickel Door Hardware
- Wire Vented Closet Shelving
- Wood Baseboard Throughout
- Quality Carpet & Under-Pad
- Quality Linoleum in Kitchen, Dining, Bath & Utility

APPLIANCES

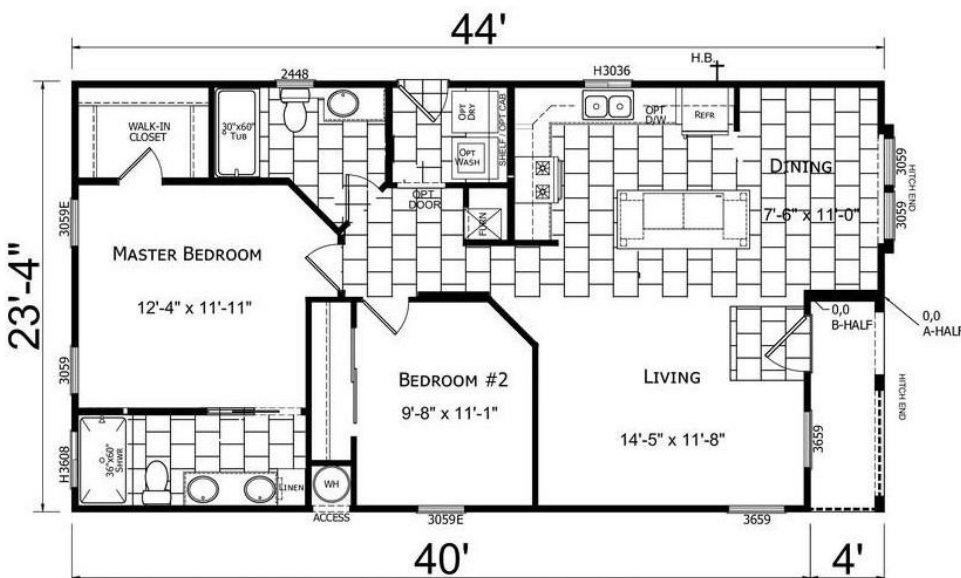
- Deluxe Electric Range (Whirlpool or Comparable)
- 18 Cubic Foot Frost Free Refrigerator (Whirlpool or Comparable)
- 30" Vented Range Hood with Illumination
- Ice Maker Prepped

PLUMBING/HEATING/ELECTRICAL/UTILITY

- Air Conditioning & Electric Forced Air Furnace
- Convenient Shut-Off Valves Throughout
- 30 Gallon Fast Recovery Water Heater
- 200 AMP Electrical Service
- Carbon Monoxide and Smoke Detectors
- 6" LED Can Lights Throughout

BATHS

- Granite or Quartz Counter-Tops w/ Single Eased Edge
- 4" Granite or Quartz Backsplash
- Fiberglass Tub/Shower Stall with Tile Embossing
- Brushed Nickel Faucets & Door Hardware
- Undermount Bath Sink



INFORMATION ON THIS LITERATURE MAY VARY FROM THE ACTUAL HOME. WE RESERVE THE RIGHT TO MAKE CHANGES AT ANY TIME, WITHOUT NOTICE OR OBLIGATION.

MODEL AF2444B
2 BEDROOM, 2 BATH
TOTAL AREA: 1027 SQ. FT.